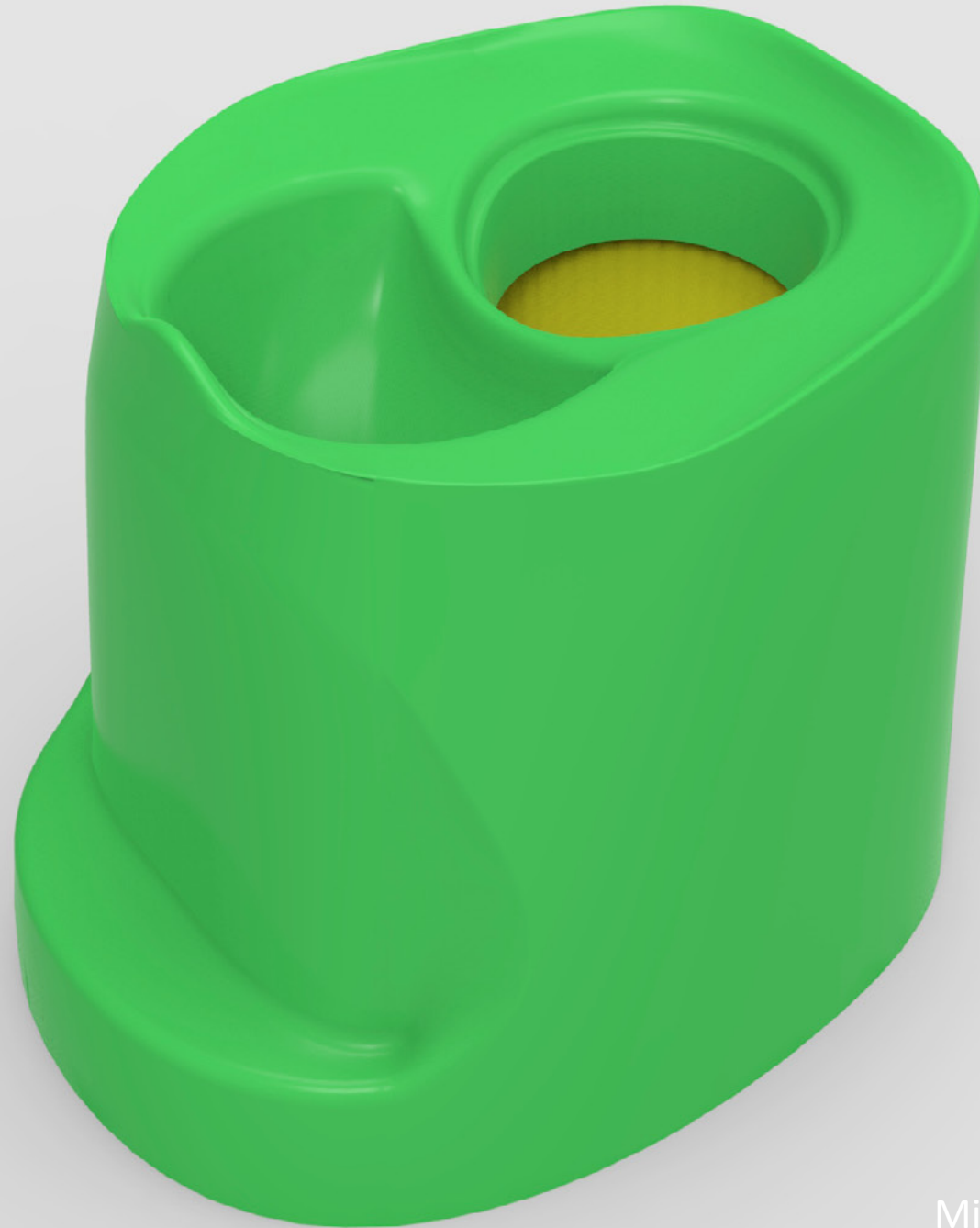


# OXFAM Jitegemee

In-Home Toilet Design

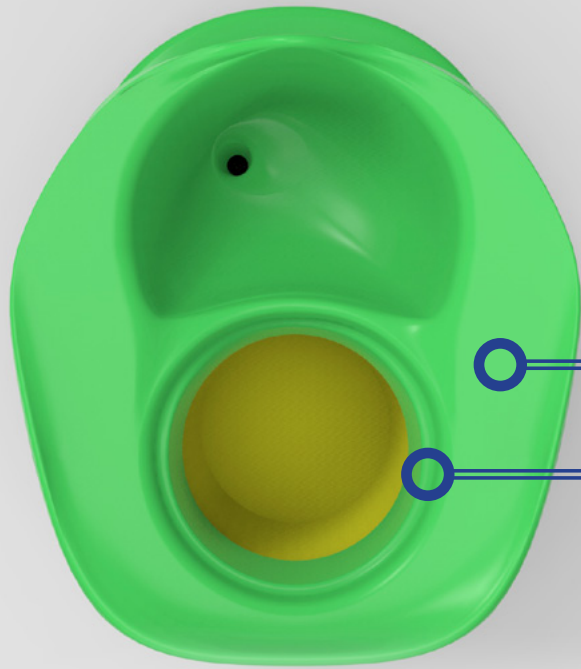
August 2014



**Sanergy**

Mike Hahn : [mhahn@saner.gy](mailto:mhahn@saner.gy)

# Initial Design Concept

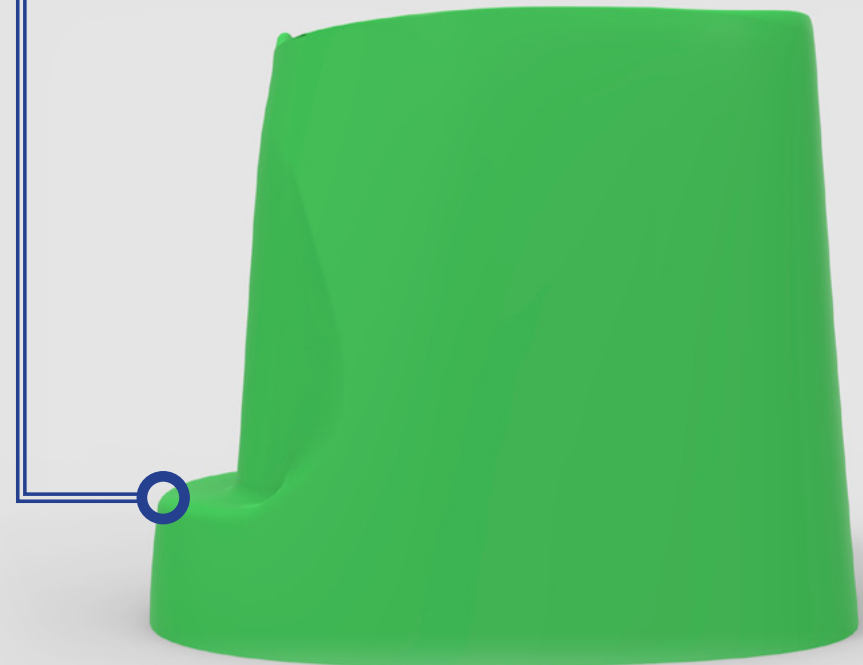


The seat has a wide sitting surface and is sloped inward to provide more comfort. It also has a small upward lip on the back side to help the user locate themselves over the toilet.

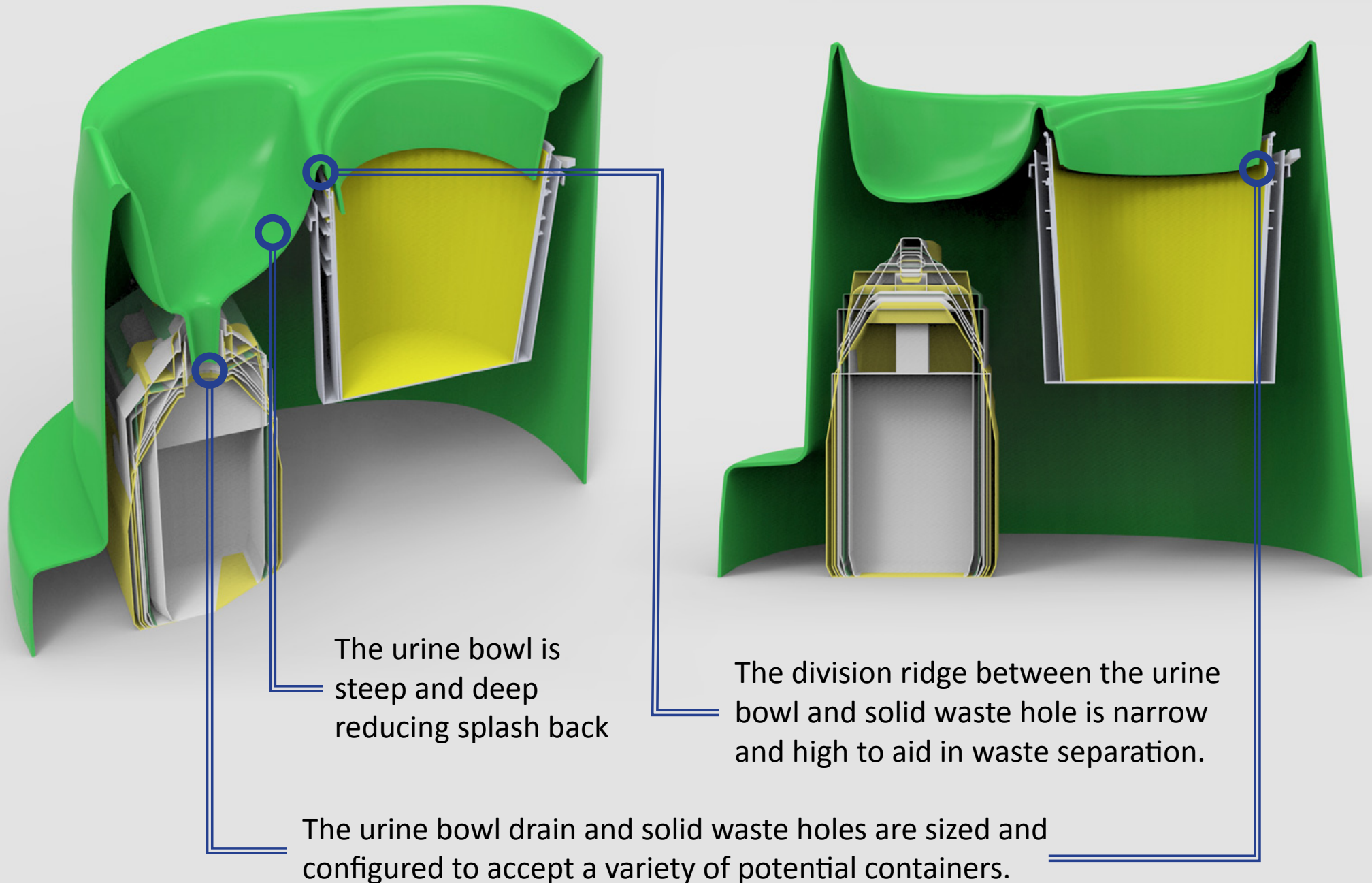
The solid waste hole is a standard size to allow the incorporation of a child potty designed for both sit and squat UDDTs.

The overall seat height is 45cm which is ideal for most adults but also allows for a deeper urine bowl to reduce splashing.

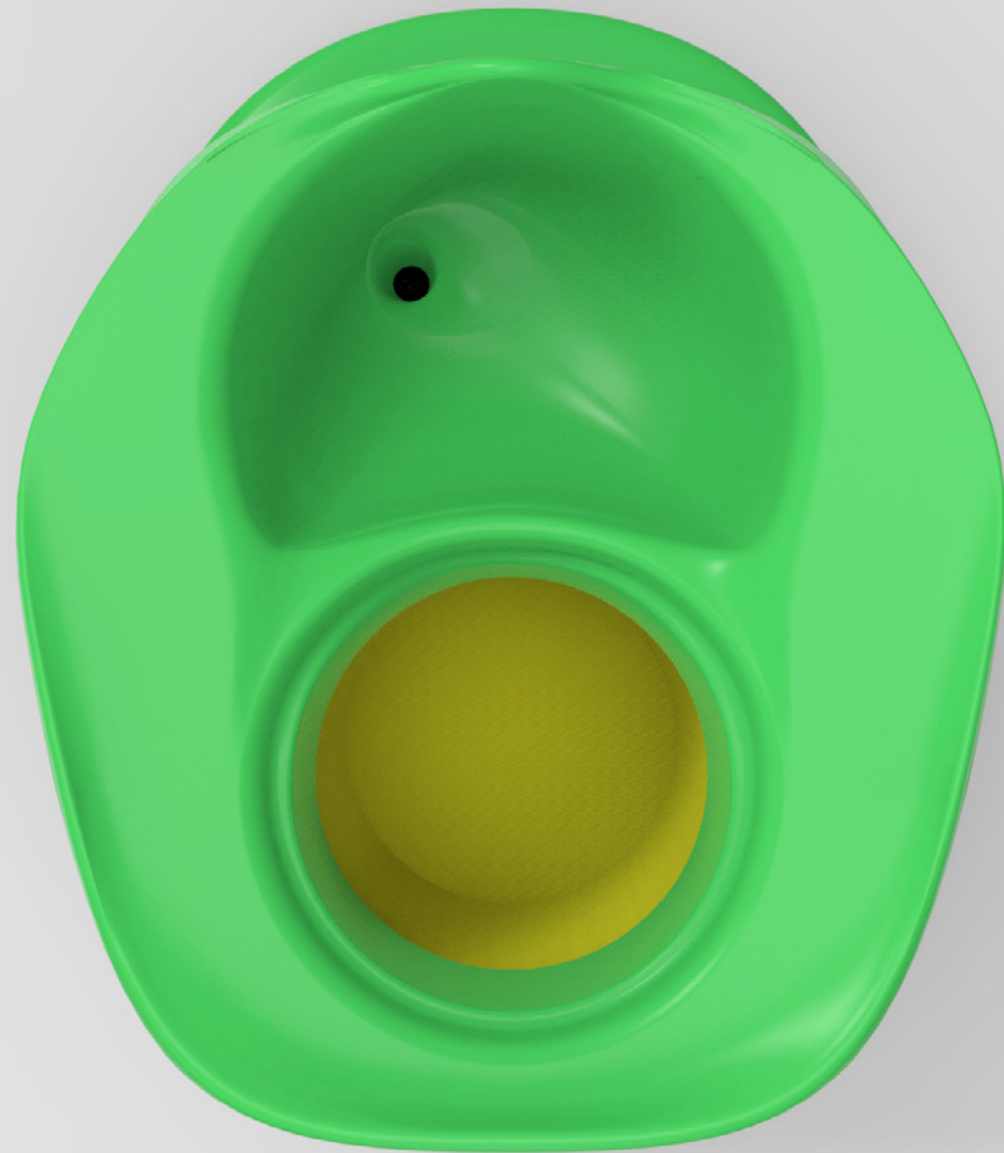
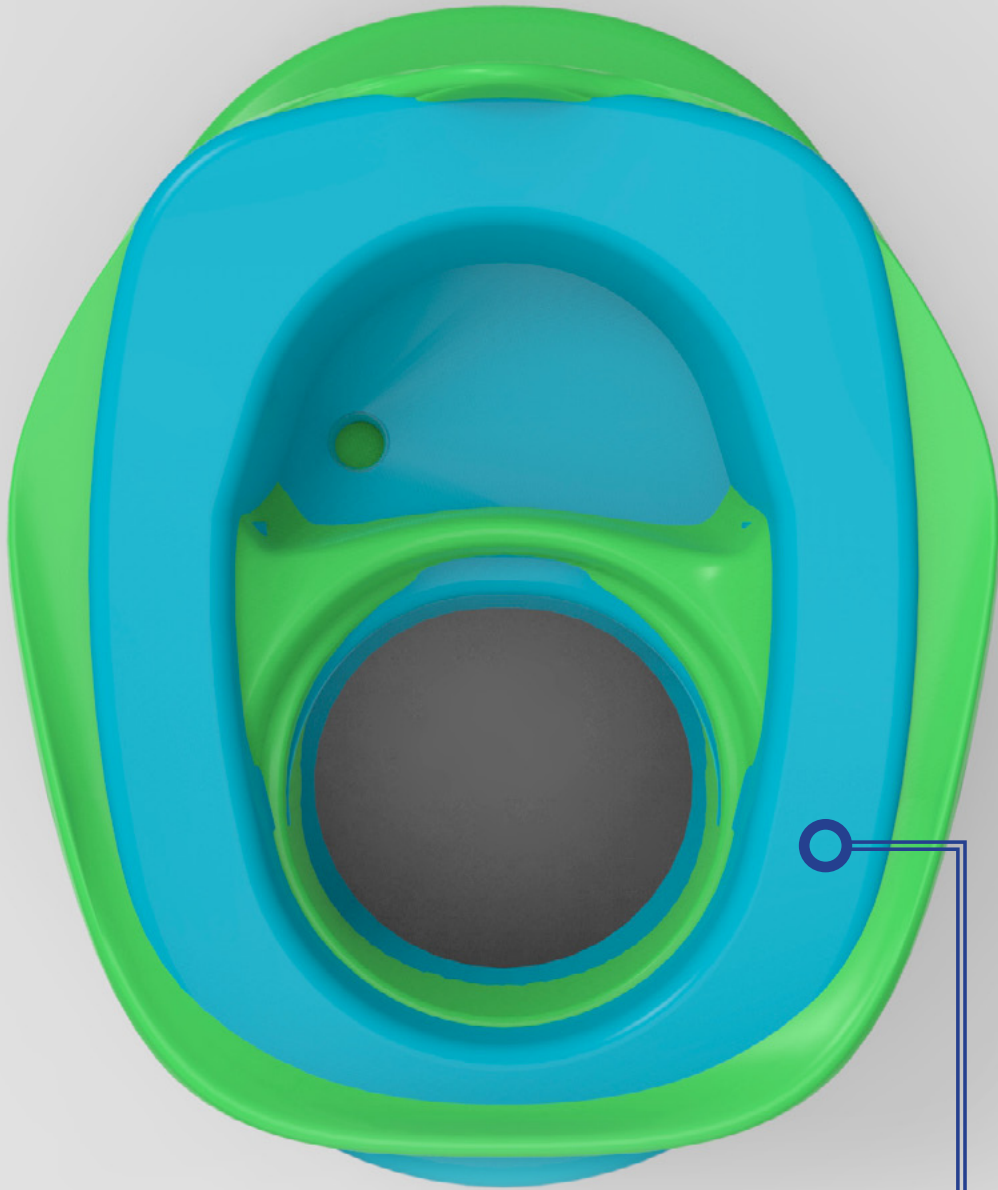
A small shelf provides a foot hold for young children between 4 and 9 years of age.



# Initial Design Concept



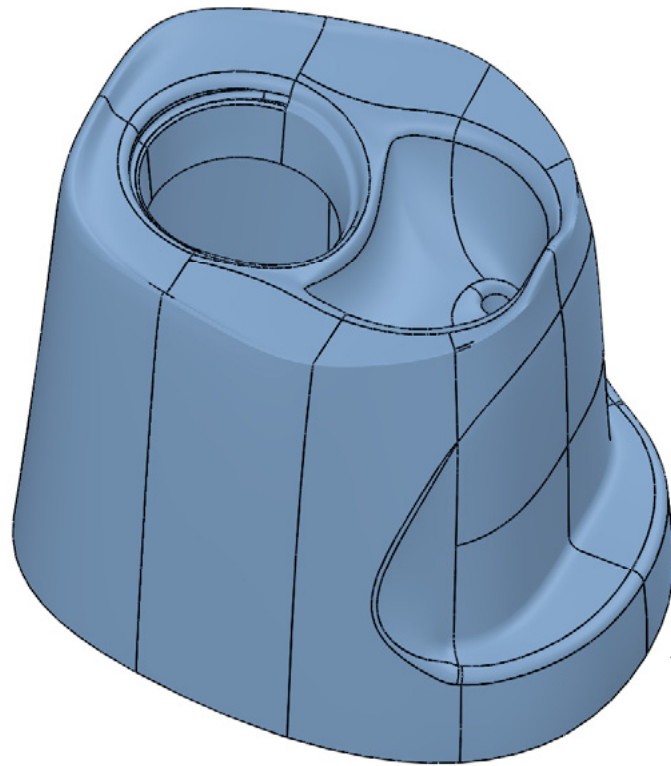
# Concept Comparison



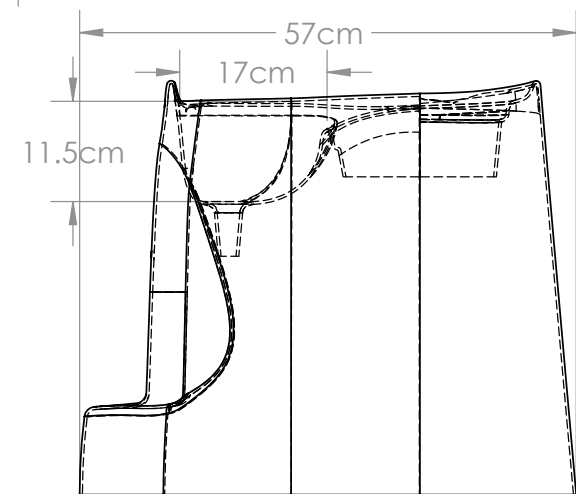
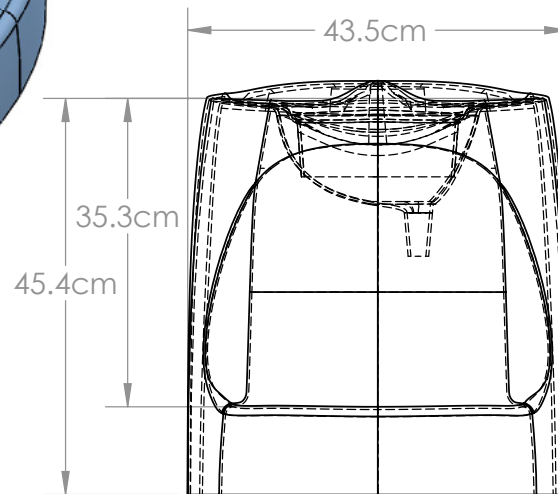
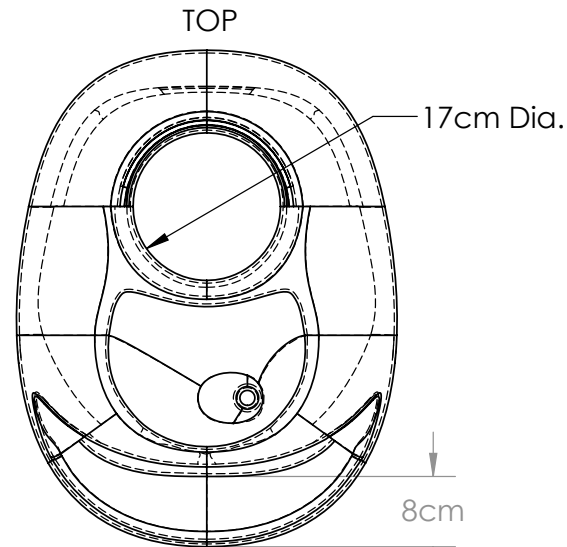
The blue represents the previous Jitegemee toilet design.



# Concept Detail



**In-Home UDDT**



**FRONT**

**SIDE**

Contact: Mike Hahn, mhahn@saner.gy, +1 207 208 9831

Notes:

**Sanergy**

IHUD\_v1

SHEET 1 OF 1