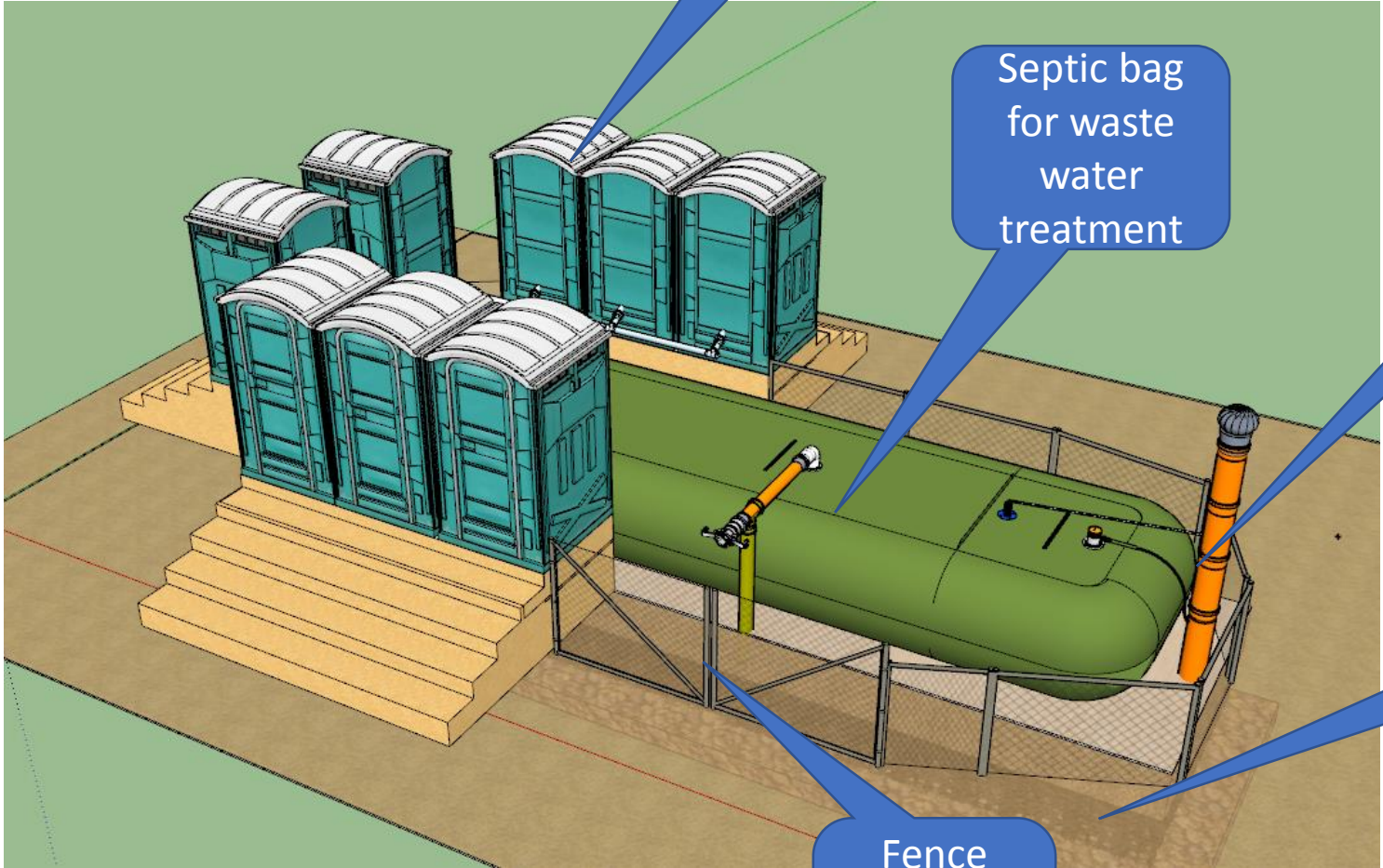


**The Complete System**



Up to 10  
Toilets for  
500 Users

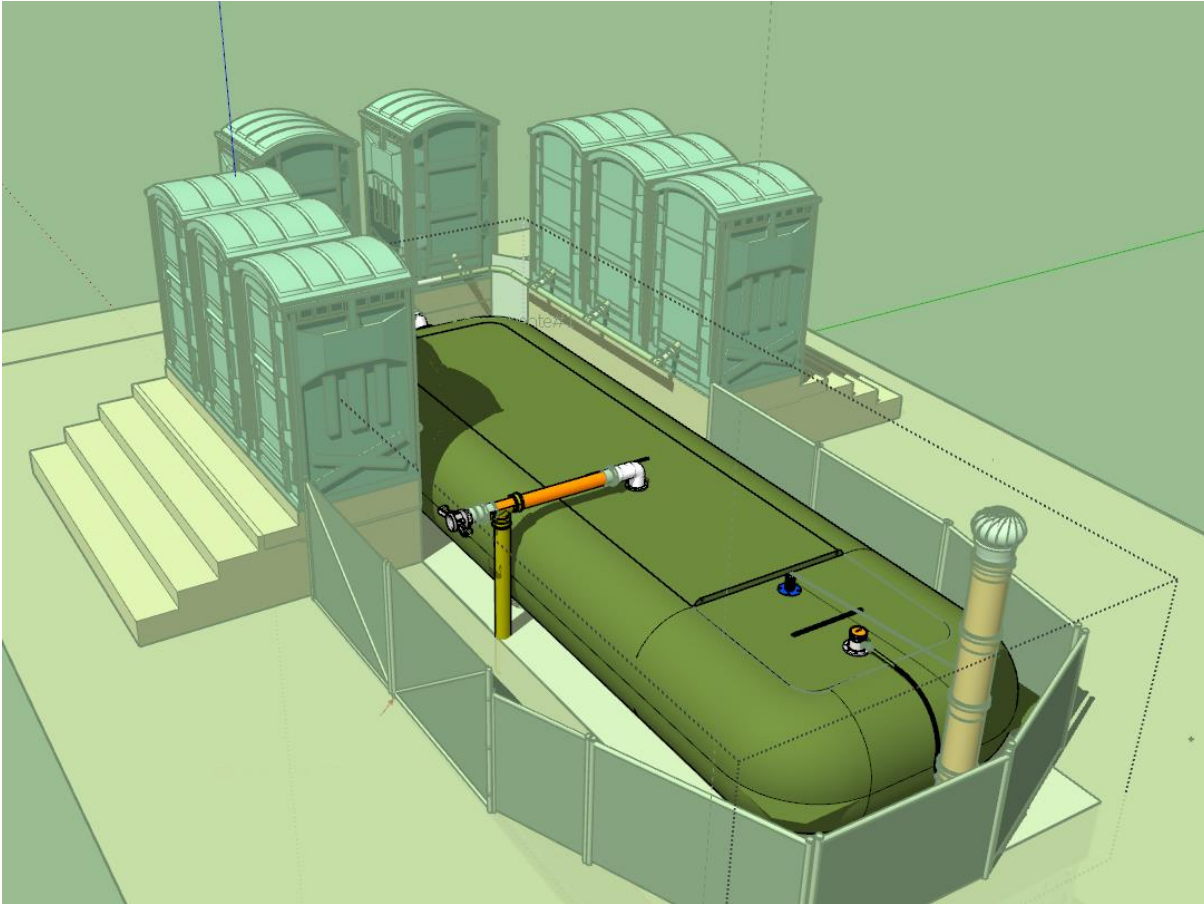
Septic bag  
for waste  
water  
treatment

Infiltration  
shaft

Underground  
Infiltration  
system

Fence  
and gate  
for  
security

## The Septic Bag

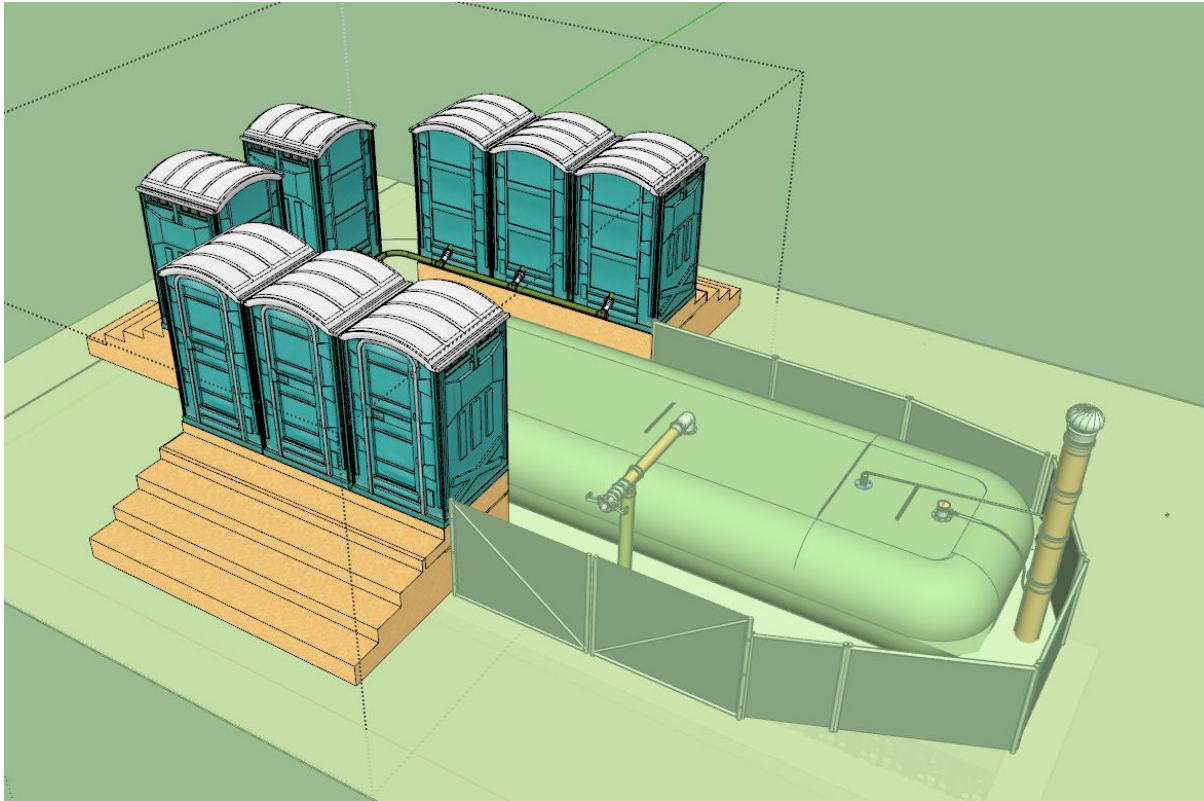


The Septic Bag is the main component of the system:

- It separates liquids and solids through sedimentation
- It provides a safe containment for the faecal matter sedimented
- It supplies anaerobic conditions to enable biodegradation through methane bacteria
- It has inbuilt desludging pipes and connectors with quick couplings for fast setup and desludging
- The biogas will be captured in the biogas outlet pipe

Price of the unit: 2500 € (if a minimum of 100 Units is ordered)

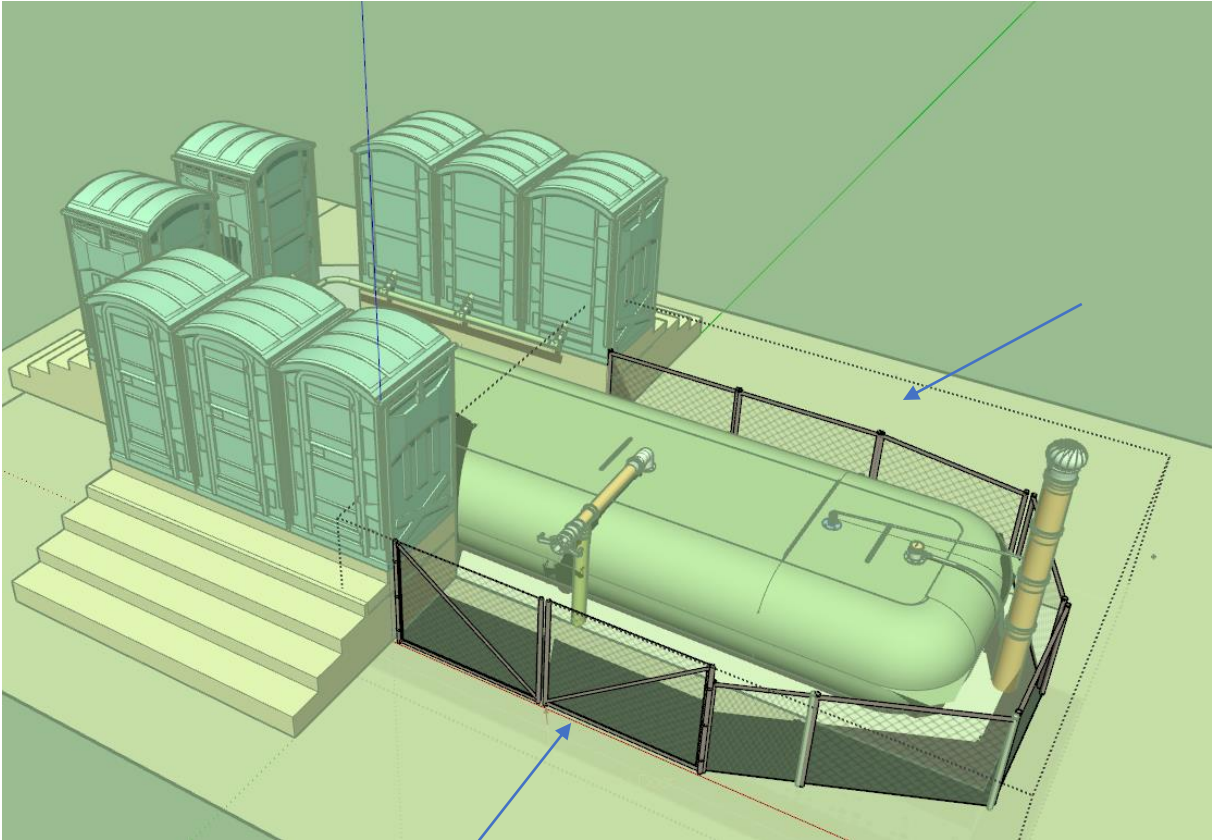
## The Toilet structure



If the slope of the area is not suitable, elevated toilets have to be used to ensure the needed head. Toilets bowls should have a pour flush system and should require a maximum of 2-3 liter of water per flush.

Price: depending on supplier

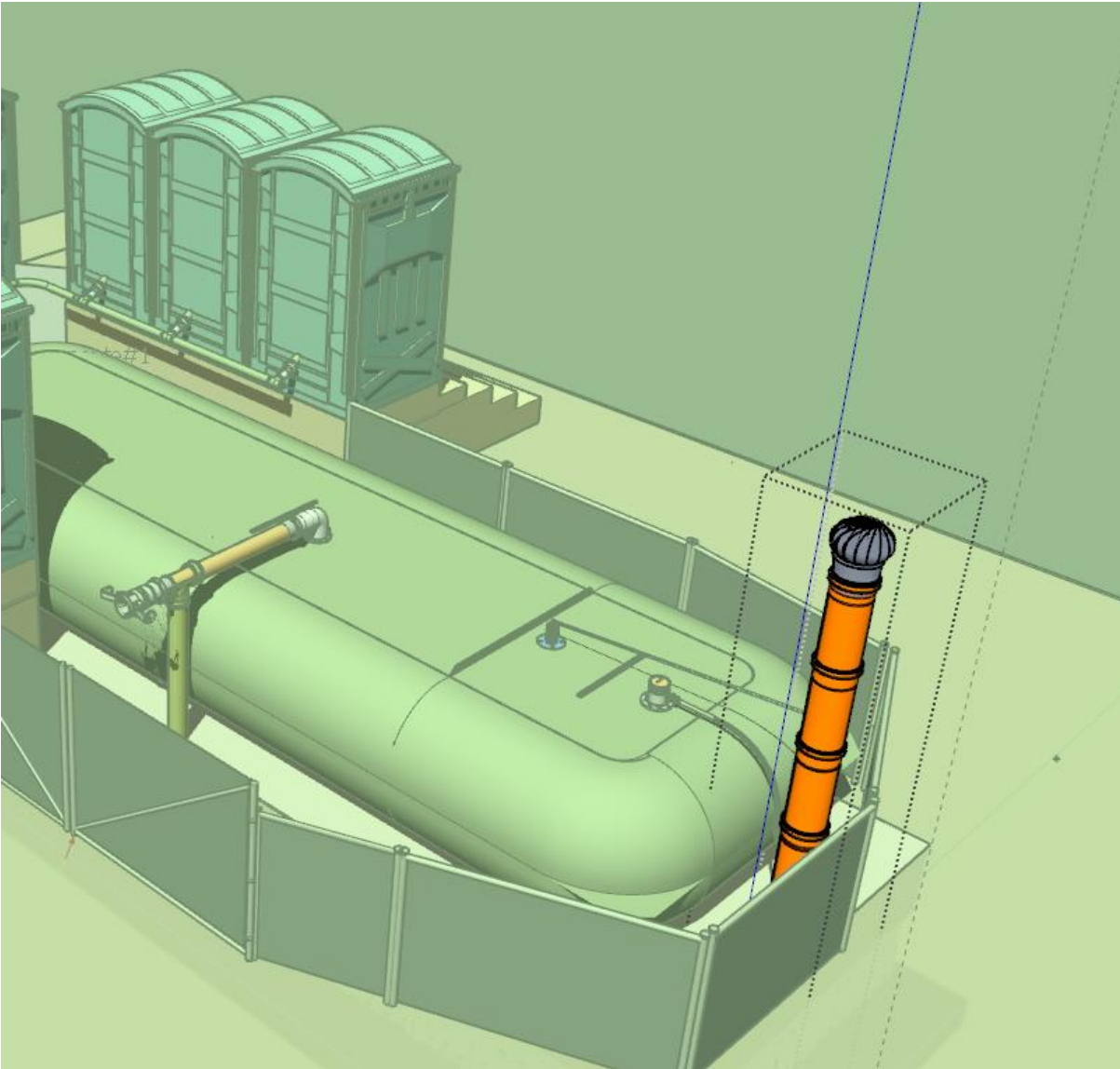
## Fence | Security



The system should be protected with a fence.  
In many cases the toilet structures can substitute  
parts of the fence.  
It is advisable to use local available material.

Price: depending on local conditions

## The Infiltration shaft

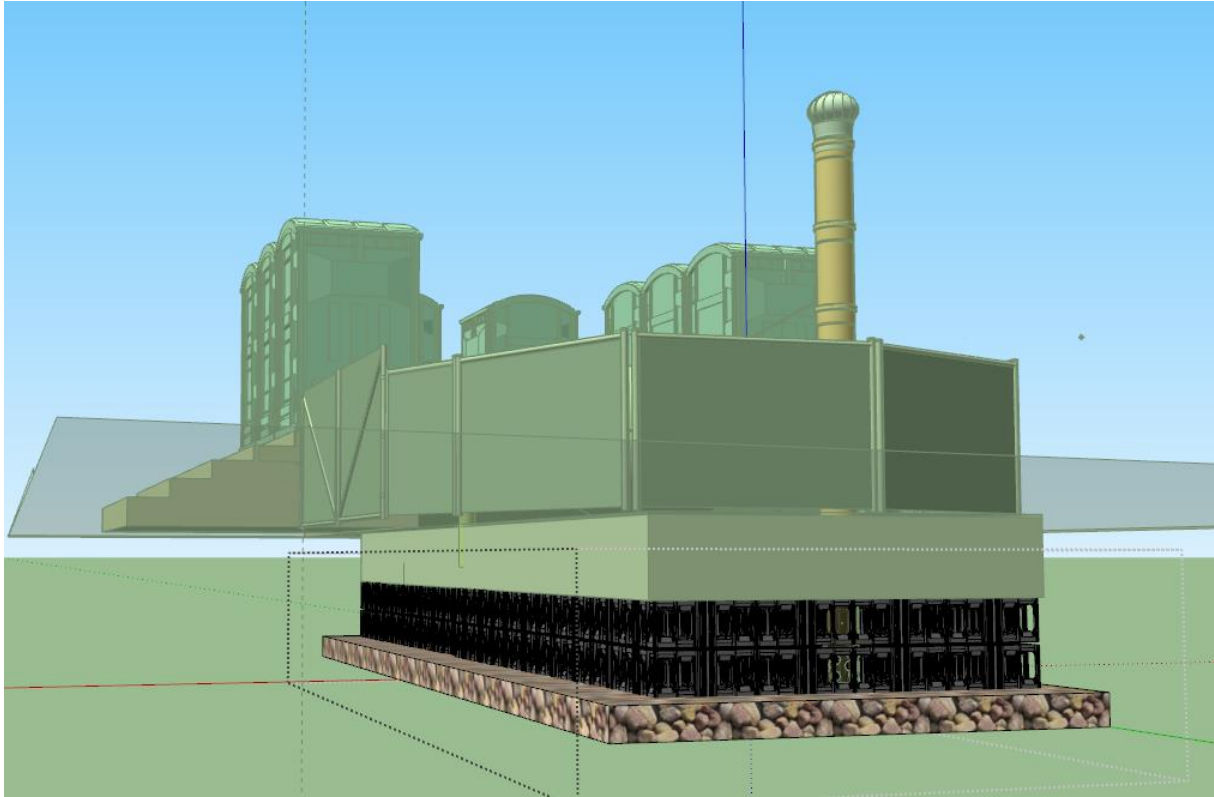


The Infiltration shaft has several purposes:

- Interface from the Septic Bag to the infiltration system
- Ventilation for the infiltration system
- It contains the pressure regulator for the septic bag
- It contains a smell filter for cases, where the produced biogas can not be utilized

Price: 360 € Probably the ventilator can be eliminated in the final product. Additionally the filter material would not be required if the biogas is used. In this case the price would go down to 85 €

## The Infiltration System



The Infiltration System safely infiltrates the solids free water into the ground.  
The required size depends on the infiltration capacity of the soil.

If other save disposal options are available, this component would not be required.

Price for a typical setup: 390 £

## Geotextiles



Geotextiles to protect the septic bag towards the ground and a shade net to extend the UV stability are parts of the kit.

Depending on the test results the shade net might not be required in the final product

Price: 175€ (probably cheaper from other suppliers)